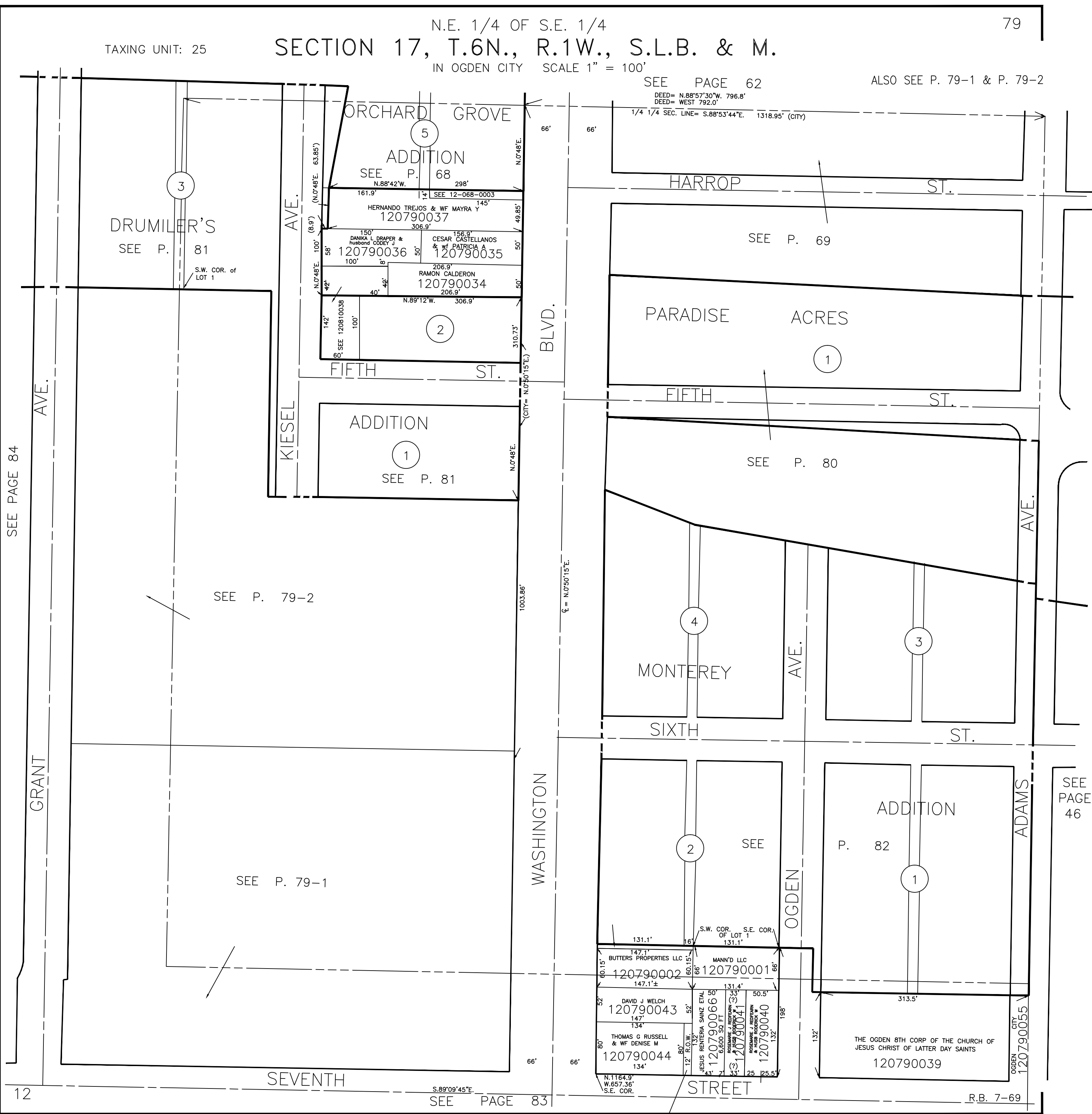


TAXING UNIT: 25

N.E. 1/4 OF S.E. 1/4
SECTION 17, T.6N., R.1W., S.L.B. & M.
IN OGDEN CITY SCALE 1" = 100'

SEE PAGE 62

ALSO SEE P. 79-1 & P. 79-2



DEED= N.88°57'30"W. 796.8'
DEED= WEST 792.0'

1/4 1/4 SEC. LINE= S.88°53'44"E. 1318.95' (CITY)

ORCHARD GROVE

ADDITION

SEE P. 68

DRUMILER'S
SEE P. 81

S.W. COR. of
LOT 1

HERNANDO TREJOS & WF MAYRA Y
120790037

DANIKA L. DRAPER &
husband CODEY J
120790036

CESAR CASTELLANOS
& wf PATRICIA A
120790035

RAMON CALDERON
120790034

SEE P. 69

PARADISE ACRES

FIFTH ST.

FIFTH ST.

ADDITION

SEE P. 81

SEE P. 80

SEE P. 79-2

SEE P. 79-1

MONTEREY

SIXTH

ST.

ADDITION

P. 82

SEVENTH

S.89°09'45"E.
SEE PAGE 83

S.W. COR. OF LOT 1
131.1'

BUTTERS PROPERTIES LLC
120790002

MANN'D LLC
120790001

DAVID J WELCH
120790043

THOMAS G RUSSELL
& WF DENISE M
120790044

JESUS RENTERIA SAINZ ETAL
120790066

JESUS RENTERIA SAINZ ETAL
120790041

ROSEANNE J REDFERN
& HUSB ROBERT W
120790040

THE OGDEN 8TH CORP OF THE CHURCH OF
JESUS CHRIST OF LATTER DAY SAINTS
120790039

N.1164.9'
W.657.36'
S.E. COR.

OGDEN STREET

R.B. 7-69

(JESUS RENTERIA SAINZ ETAL)
120790042
1040 SQ FT

SEE PAGE 84

GRANT AVE.

12

SEE PAGE 46

ADAMS AVE.

ADAMS

OGDEN CITY
120790055